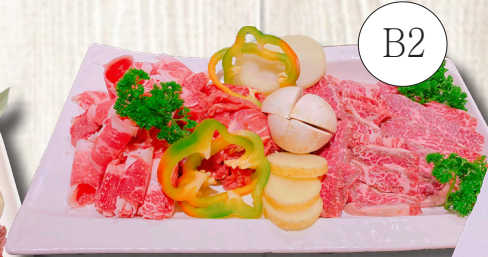


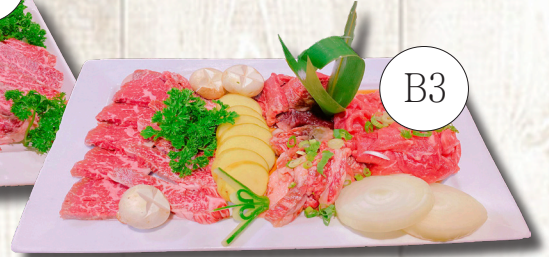
BBQ



B1



B2



B3

B1

Combo A Set ~~163~~ → **118**

Pork Belly+M-Pork Collar+
M-Chicken+Wagyu Tri Tip+Wagyu
Brisket+Lettuce+2Rice+Ice Cream

B2

Combo B Set ~~187~~ → **155**

M-Chicken+M-Pork Collar+
M-Wagyu+M-Beef Tri Tip+
K-Bulgoggi+Wagyu Brisket+Lettuce
+2Rice+Ice Cream

B3

Combo C Set ~~201~~ → **160**

Wagyu Chuck Eye Roll+Wagyu
Tri Tip+M-Wagyu+M-Beef
Tri Tip+K-Bulgoggi+Wagyu
Brisket+Lettuce+2Rice+Ice Cream



B4



B5



B6



B7



B9

BBQ minimum 2 serves (2인분 이상 주문)

B4 **Pork Belly** 삼겹살 (200g) **24**

B5 **M-Pork Collar** 목살 주물럭 (200g) **24**
Marinated Pork Collar (200g)

B6 **M-Chicken** 치킨 주물럭 (200g) **24**
Marinated Chicken (200g)

B7 **M-Beef Tri Tip** 삼각살 주물럭 (200g) **24**
Marinated Beef Tri Tip (200g)

B8 **K-Bulgogi** 양념 불고기 (200g) **24**
Marinated Sweet Beef (200g)

B9 **Wagyu Brisket** 차돌박이 (200g) **34**

B10 **Wagyu Chuck Eye Roll** 와규 알목심 (150g) **34**

B11 **Wagyu Tri Tip** 와규 삼각살 (150g) **34**

B12 **M-Wagyu** 와규 주물럭 (150g) **34**
Marinated Wagyu (150g)

B13 **Extra Lettuce** 상추 추가 **7**

B14 **Extra Veggies & Mushroom** 버섯 야채 추가 **7**